

## Polyethylen PE 300

### **PE 300**

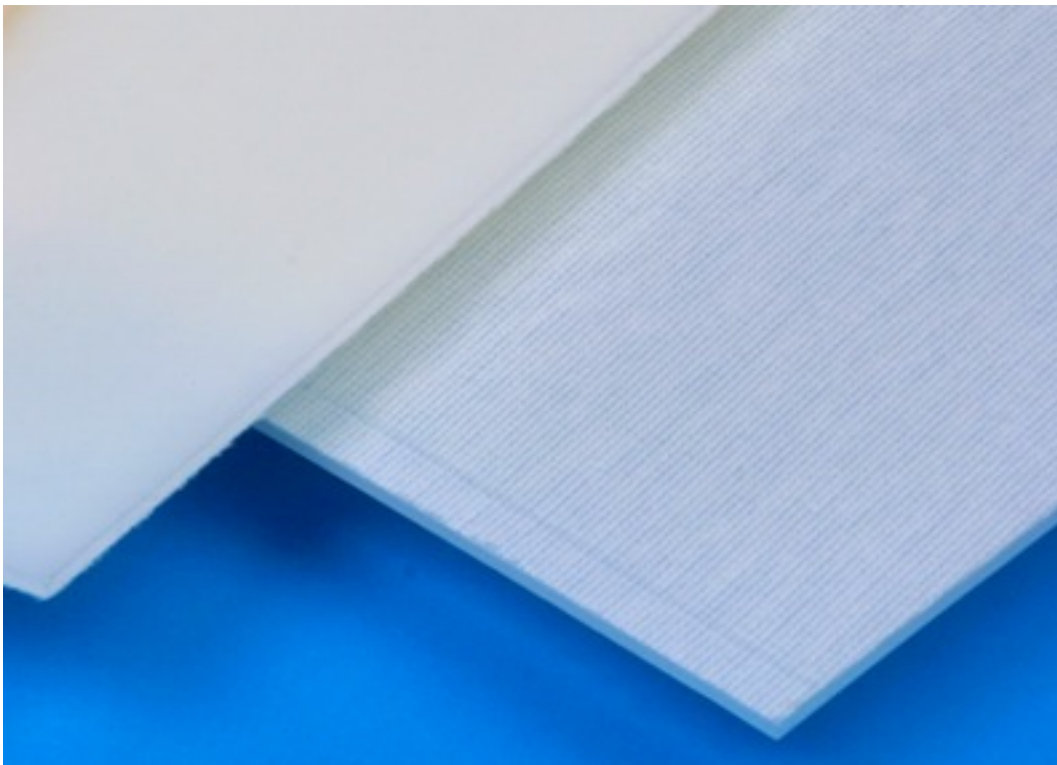
ist ein Polyethylen mit hoher Dichte. Es lässt sich leicht verarbeiten, ist physiologisch unbedenklich und zeichnet sich durch sein geringes Gewicht aus. Hinzu kommt seine gute Chemikalienbeständigkeit und seine guten mechanischen Eigenschaften.

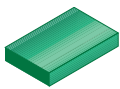
### Anwendungsgebiet:

Chemischer Apparate- und Behälterbau, allgemeiner Maschinenbau, Getränkeindustrie.

### **PE 300 ELS**

elektrisch leitfähig





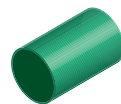
## Platten

### Farben

○ naturfarben

● schwarz

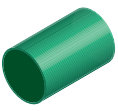
Stärke	Längen	Toleranzen Stärke mm		PE 300			PE 300 ELS
				Breite: 1.000 mm	Breite: 1.500 mm	Breite: 2.000 mm	Breite: 1.000 mm
				kg/m	kg/m	kg/m	kg/m
mm	mm	min.	max.				
1	2.000	-0,1	0,1	0,970 ○●			
				1,450 ○●			
2	3.000	-0,15	0,15	1,990 ○●			
					2,870 ○●		
3	2.000	-0,17	0,17	2,990 ○●			2,950 ●
					4,480 ○●		
4	2.000	-0,2	0,2	3,850 ○●			3,950 ●
					5,980 ○●		
5	2.000	-0,25	0,25	4,850 ○●			4,950 ●
					7,480 ○●		
						9,550 ●	
6	2.000			5,980 ○●			5,950 ●
					9,070 ○●		
						11,530 ●	
8	2.000	-0,3	0,3	7,750 ○●			7,900 ●
					11,970 ○●		
						15,350 ●	
10	2.000	-0,4	0,4	9,700 ○●			9,900 ●
					14,550 ○●		
						19,200 ○●	
12	2.000	-0,45	0,45	11,500 ○●			
					17,950 ○●		
						23,050 ●	
15	2.000	-0,55	0,55	14,550 ○●			14,850 ●
					21,600 ○●		
						28,800 ○●	
20	2.000	-0,7	0,7	19,400 ○●			19,800 ●
					29,100 ○●		
						38,400 ○●	
25	2.000	-0,8	0,8	24,250 ○●			24,750 ●
					37,410 ○●		
						48,000 ○●	
30	2.000	-1	1	29,920 ○●			29,700 ●
					44,880 ○●		
						57,600 ○●	
35	2.000	-1,15	1,15	34,910 ○●			
40	3.000	-1,3	1,3	39,900 ○●			39,600 ●
					59,830 ●		
						76,800 ●	
50	2.000	-1,55	1,55	49,900 ○●			
						96,000 ●	
60	2.000	-0,3	0,3	57,300 ○●			
70				66,850 ●			
80				76,400 ○●			
90				85,950 ●			
100				-0,4	0,4	95,500 ○●	



## Rundstäbe

- Farben**  
 ⊙ naturfarben  
 ● schwarz

mm	Längen mm	Toleranzen außen mm		PE 300	
		min.	max.	kg/m	
8	1.000 - 2.000	0,1	0,5	0,050 ⊙ ●	
10			0,6	0,080 ⊙ ●	
12		0,2	0,7	0,120 ⊙ ●	
15			0,8	0,190 ⊙ ●	
20		1,2		0,330 ⊙ ●	
25				1,040 ⊙ ●	
30				0,720 ⊙ ●	
35		1,3		1,000 ⊙ ●	
40			1,5	1,300 ⊙ ●	
45		2		1,620 ⊙ ●	
50			0,3		2,010 ⊙ ●
55				2,400 ⊙ ●	
60		2,3		3,000 ⊙ ●	
65			2,5		3,400 ⊙ ●
70				3,910 ⊙ ●	
75		0,4	3		4,520 ⊙ ●
80					5,500 ⊙ ●
90		0,5	3,4	6,500 ⊙ ●	
100		0,6	3,8	8,000 ⊙ ●	
110		0,7	4,2	9,900 ⊙ ●	
120	0,8	4,6		11,500 ⊙ ●	
125				12,400 ⊙ ●	
130	4,8		13,500 ⊙ ●		
135		0,9	5,4		14,600 ⊙ ●
140				15,600 ⊙ ●	
150	1	5,8	18,200 ⊙ ●		
160	1,1	8	20,400 ⊙ ●		
165	1,2		21,200 ⊙ ●		
170			23,000 ⊙		
180			25,700 ⊙ ●		
190	2.000	0	7,6	27,200 ●	
200	1.000 - 2.000	1,3	8,5	32,300 ⊙ ●	
225					42,000 ⊙ ●
250		9		50,000 ⊙ ●	
265	1.000	0	10,6	54,000 ●	
290			11,6	66,000 ●	
300	1.000 - 2.000	1,3	10	71,800 ●	
					71,800 ⊙
320	1.000	0	12,8	79,000 ●	
350			1,3	12	98,000 ⊙ ●
365		0		14,6	103,000 ●
400		1,3	12	127,000 ⊙ ●	
425			0	17	140,000 ●
460			18,4	160,000 ●	
500		1,3	12	197,000 ⊙ ●	
520			0	20,8	205,000 ●
575			23	260,000 ●	
600		1,3	20	290,000 ●	
675			0	27	345,000 ●
700		1,3	28	395,000 ●	
800		0	32	485,000 ●	




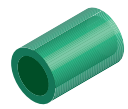
## Rundstäbe

### Farben

○ naturfarben

● schwarz



	Längen	Toleranzen außen mm		PE 300
	mm	min.	max.	kg/m
910	1.000	0	36,4	628,000 ●

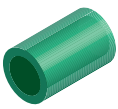


## Hohlstäbe

### Farben

● schwarz



		Längen	Toleranzen außen mm		Toleranzen innen mm		PE 300 kg/m
			min.	max.	min.	max.	
mm	mm	mm					
30	15	2.000	0,2	1,2	-0,2	-1,5	0,540●
50	30		0,3	2	-0,3	-3	1,270●
70				2,5			3,170●
75	40					-4	3,190●
90	50		0,5	3,4	-0,5	-5	4,440●
100	70		0,6	3,8	-0,6	-7	4,250●
140			0,9	5,4	-0,9		12,100●
200	120		1,3	8,5	-1,3	-12	21,400●

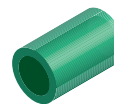


## Rohre

## Farben

● schwarz



		Längen	PE 300
mm	mm	mm	kg/m
10	1,8	5.000	0,048 ●
12			0,060 ●
16			0,084 ●
	2,2		0,100 ●
20	1,9		0,120 ●
	2,8		0,150 ●
25	2,3		0,170 ●
	3,5		0,240 ●
32	1,9		0,190 ●
	2,9		0,270 ●
40	2,4		0,300 ●
	3,7		0,430 ●
50	3		0,460 ●
	4,6		0,670 ●
63	1,8		0,360 ●
	3,8		0,730 ●
	5,8		1,060 ●
75	1,9		0,460 ●
	4,5		1,020 ●
	6,8		1,480 ●
90	5,1		1,390 ●
	5,4		1,470 ●
110	3,4		1,170 ●
	6,3		2,080 ●
	6,6		2,180 ●
125	3,1		1,250 ●
	3,9		1,510 ●
	7,1		2,660 ●
	7,4		2,780 ●
140	3,5		1,560 ●
	4,3		1,880 ●
	8		3,340 ●
	8,3	3,490 ●	
160	4	2,000 ●	
	4,9	2,420 ●	
	9,1	4,350 ●	
	9,5	4,560 ●	
	14,6	6,670 ●	
180	4,4	2,510 ●	
	5,5	5,500 ●	
	10,2	5,480 ●	
	10,7	5,760 ●	
	16,4	8,420 ●	
200	4,9	3,050 ●	
	6,2	3,840 ●	
	11,4	6,790 ●	
	11,9	7,110 ●	
	18,2	10,400 ●	
225	5,5	3,900 ●	
	6,9	4,780 ●	
	12,8	8,550 ●	
	13,4	9,000 ●	
	20,5	13,100 ●	



## Rohre

### Farben

● schwarz

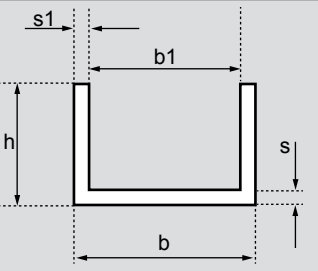
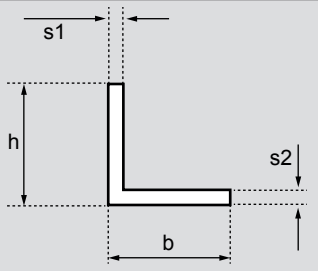
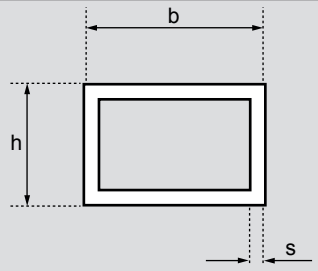
		Längen	PE 300
mm	mm	mm	kg/m
250	6,2	5.000	4,830 ●
	7,7		5,920 ●
	14,2		10,600 ●
	14,8		11,000 ●
	22,7		16,200 ●
280	8,6		7,400 ●
	15,9		13,200 ●
	16,6		13,900 ●
	25,4		20,300 ●
315	7,7		7,510 ●
	9,7		9,370 ●
	17,9		16,700 ●
	18,7		17,600 ●
	28,6		25,600 ●
355	8,7		9,650 ●
	10,9		11,800 ●
	20,1		21,200 ●
	21,1		22,300 ●
	32,2		32,500 ●
400	9,8		12,100 ●
	12,3		15,100 ●
	22,7		26,900 ●
	23,7		28,200 ●
450	11		15,400 ●
	13,8		19,000 ●
	25,5	34,000 ●	
	26,7	35,800 ●	
500	12,3	19,200 ●	
	15,3	23,400 ●	
	28,4	42,000 ●	
	29,7	44,200 ●	
560	17,2	29,400 ●	
	31,7	52,500 ●	
	33,2	55,400 ●	
630	15,4	29,900 ●	
	19,3	37,100 ●	
	35,7	66,500 ●	
	37,4	70,000 ●	
710	21,8	47,200 ●	
800	19,6	48,100 ●	
	24,5	59,700 ●	
	47,4	113,000 ●	
1.000	59,3	176,000 ●	

## Profile

### Farben

● schwarz

Länge: 5000 mm

PE 300		
		
U-Profil gleichschenkelig Version A	W-Profil gleichschenkelig Version A	Rechteck-Vierkantrohrprofil
<b>B mm x H mm x S mm</b>	<b>B mm x H mm x S1 mm x S2 mm</b>	<b>B mm x H mm x S mm</b>
27x46x3 ●	30x30x3x3 ●	35x35x3 ●
48x46x3,5 ●	40x40x4x4 ●	50x50x4 ●
49x69x4 ●	50x50x5x5 ●	73x53x4 ●
49x112x4 ●		
69x65x4 ●		
69x132x4 ●		
90x92x4 ●		