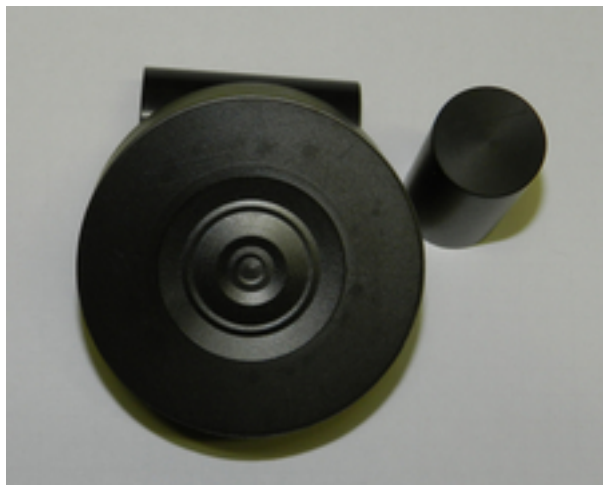


Polyimid



PI ist ein Hochleistungskunststoff, dessen herausragende Eigenschaft seine sehr hohe Temperaturbeständigkeit ist (kurzzeitige Spitzen bis 480°C möglich). Gleichzeitig zeichnet sich dieser Kunststoff durch seine hohe mechanische Festigkeit, Steifigkeit und Kriechfestigkeit aus, was eine sehr hohe Dimensionsstabilität gewährleistet.

Anwendungsgebiet:

Buchsen, Lager, Dichtungsringe in thermisch anspruchsvollen Anwendungen, Luft- und Raumfahrt, Reinraumtechnik

PI +GR15

mit 15% Grafitanteil

PI +GR40

mit 40% Grafitanteil

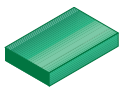
PI +GR15 +PTFE10

mit 15% Grafitanteil und 10% Polytetrafluorethylen

PI +MOS15

mit 15% Festschmierstoff Molybdändisulfid





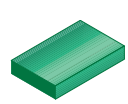
Platten

Farben

○ naturfarben

● anthrazit

Stärke	Längen	PI		PI +GR15		PI +GR40	
		Breite: 127 mm	Breite: 254 mm	Breite: 127 mm	Breite: 254 mm	Breite: 127 mm	Breite: 254 mm
mm	mm	kg/m	kg/m	kg/m	kg/m	kg/m	kg/m
1,6	254		0,551 ○		0,591 ●		0,630 ●
3,2			1,100 ○		1,180 ●		1,300 ●
4,8				1,690 ○		1,770 ●	
6,3	127 - 254	1,100 ○		1,180 ●		1,260 ●	
	254		2,200 ○		2,360 ●		2,560 ●
12,7	127 - 254	2,200 ○		2,360 ●		2,600 ●	
	254		4,450 ○		4,690 ●		5,120 ●
25,4	127 - 254	4,490 ○		4,720 ●		5,120 ●	
	254		8,900 ○		9,370 ●		10,280 ●
38,1	127 - 254	6,690 ○		7,090 ●		7,720 ●	
	254		13,390 ○		14,060 ●		15,390 ●
50,8	127 - 254	8,900 ○		9,450 ●		10,240 ●	
	254		17,800 ○		18,700 ●		20,510 ●



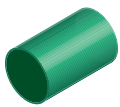
Platten

Farben

○ naturfarben

● anthrazit

Stärke	Längen	PI +GR15 +PTFE10		PI +MOS15	
		Breite: 127 mm	Breite: 254 mm	Breite: 127 mm	Breite: 254 mm
mm	mm	kg/m	kg/m	kg/m	kg/m
1,6	254		0,630 ●		0,591 ●
3,2			1,220 ●		1,180 ●
4,8			1,850 ●		1,770 ●
6,3	127 - 254	1,180 ●		1,180 ●	
	254		2,440 ●		2,360 ●
12,7	127 - 254	2,440 ●		2,360 ●	
	254		4,920 ●		4,720 ●
25,4	127 - 254	4,880 ●		4,720 ●	
	254		9,800 ●		9,370 ●
38,1	127 - 254	7,320 ●		7,010 ●	
	254		14,720 ●		14,020 ●
50,8	127 - 254	9,840 ●		9,450 ●	
	254		19,610 ●		18,700 ●




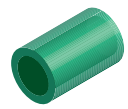
Rundstäbe

Farben

○ naturfarben

● anthrazit



	Längen	PI	PI +GR15	PI +GR40	PI +GR15 +PTFE10	PI +MOS15
mm	mm	kg/m	kg/m	kg/m	kg/m	kg/m
6,3	965	0,044 ○	0,047 ●	0,051 ●	0,049 ●	0,047 ●
9,5		0,100 ○	0,110 ●	0,160 ●	0,111 ●	0,110 ●
11,1		0,138 ○	0,145 ●	0,159 ●	0,152 ●	0,145 ●
12,7		0,180 ○	0,189 ●	0,208 ●	0,198 ●	0,189 ●
15,8		0,279 ○	0,293 ●	0,321 ●	0,307 ●	0,293 ●
19		0,403 ○	0,424 ●	0,464 ●	0,444 ●	0,424 ●
25,4		0,720 ○	0,757 ●	0,830 ●	0,793 ●	0,757 ●
31,7		1,120 ○	1,180 ●	1,290 ●	1,240 ●	1,180 ●
38,1		1,620 ○	1,700 ●	1,870 ●	1,790 ●	1,700 ●
50,8		2,880 ○	3,030 ●	3,320 ●	3,170 ●	3,030 ●
63,5		4,500 ○	4,730 ●	5,190 ●	4,960 ●	4,730 ●
82,5	685	7,600 ○	7,980 ●	8,750 ●	8,400 ●	7,980 ●



Hohlstäbe

Farben

- naturfarben
- anthrazit

		Längen	PI	PI +GR15	PI +GR40	PI +GR15 +PTFE10	PI +MOS15
mm	mm	mm	kg/m	kg/m	kg/m	kg/m	kg/m
78,7	48,2	838	4,130 ○	4,540 ●	4,980 ●	4,760 ●	4,540 ●
86,3	66		3,450 ○	3,630 ●	3,980 ●	3,800 ●	3,630 ●
94	48,2	203 - 838	7,270 ○	7,640 ●	8,380 ●	8,000 ●	7,640 ●
101	66		6,500 ○	6,900 ●	7,500 ●	7,200 ●	6,900 ●
109	86,3	838	4,900 ○	5,200 ●	5,700 ●	5,500 ●	5,200 ●
111	48,2		11,160 ○	11,730 ●	12,860 ●	12,290 ●	11,730 ●
119	66		10,900 ○	11,500 ●	12,600 ●	12,100 ●	11,500 ●
124	48,2	203 - 838	14,570 ○	15,300 ●	16,800 ●	16,000 ●	15,300 ●
	86,3		8,900 ○	9,300 ●			
		838			10,200 ●	9,750 ●	9,300 ●
129	66	203 - 838	13,700 ○	14,400 ●	15,800 ●	15,100 ●	14,400 ●
137	86,3	838	12,600 ○	13,300 ●			
			7,700 ○	8,100 ●	8,900 ●	8,500 ●	8,100 ●
142	119		6,700 ○	7,000 ●	7,700 ●	7,400 ●	7,000 ●
144	109		9,900 ○	10,400 ●	11,400 ●	10,900 ●	10,400 ●
149	119		9,000 ○	9,400 ●	10,300 ●	9,900 ●	9,400 ●
154	109		13,200 ○	13,900 ●	15,200 ●	14,600 ●	13,900 ●
162	142		6,800 ○	7,100 ●	7,800 ●	7,500 ●	7,100 ●
165	109	203 - 838	17,100 ○	18,000 ●			
		838			19,700 ●	18,900 ●	18,000 ●
170	119	203 - 838	16,500 ○	17,300 ●			
	142	838			19,000 ●	18,100 ●	17,300 ●
				9,800 ○	10,200 ●	11,200 ●	10,700 ●
180		203 - 838	13,700 ○	14,400 ●			
		838			15,700 ●	15,000 ●	14,400 ●